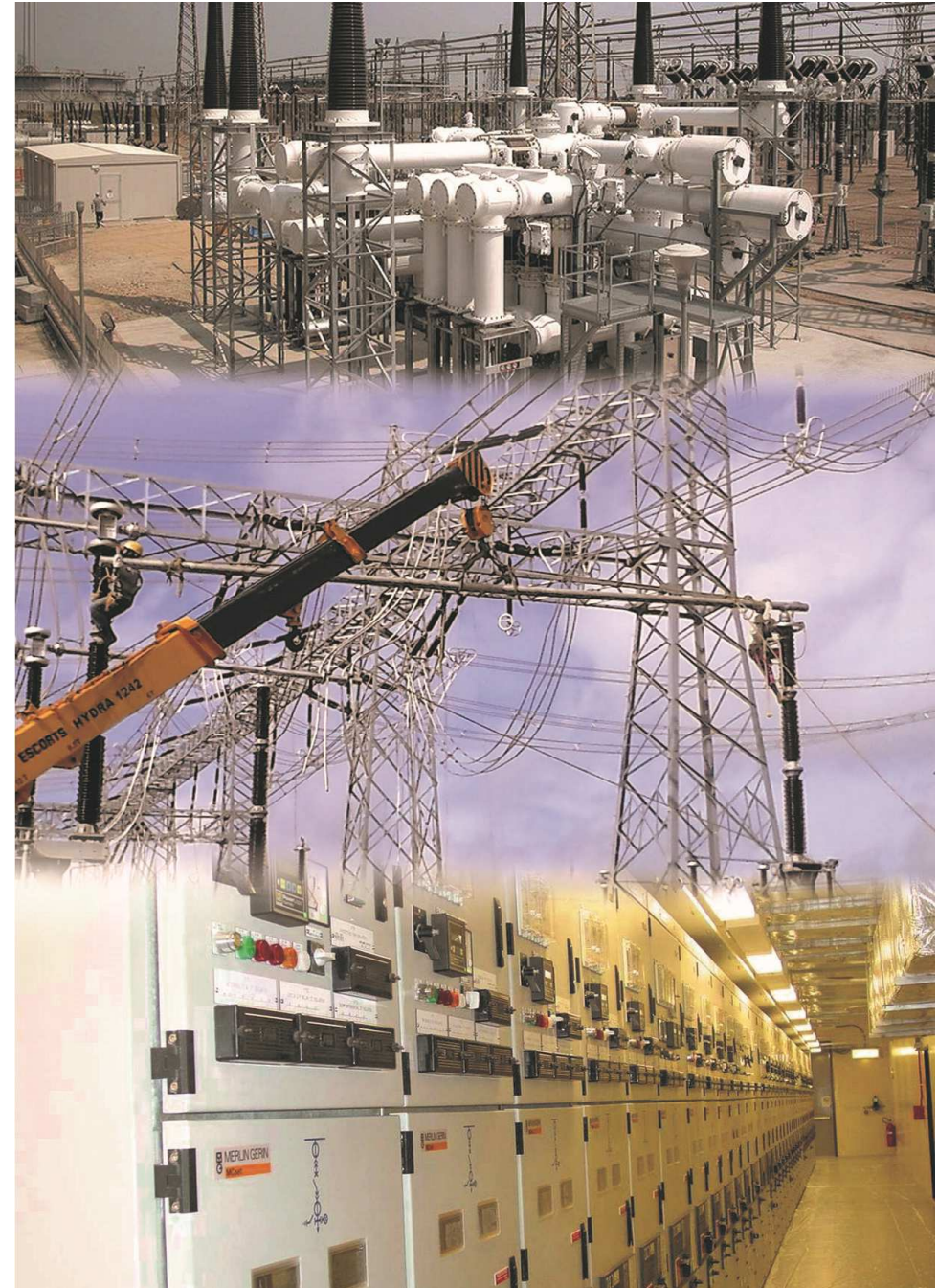


The image is a promotional graphic for NECE. It features a blue and white background with a stylized globe and several circular inset images showing electrical infrastructure: a power line tower, a power plant, a control room, and a transformer. The NECE logo is prominently displayed in the center, consisting of a stylized 'N' made of dots followed by the text 'NECE NATIONAL EXCELLENCE FOR CONSTRUCTION & ENERGY CO.'. Below the logo, the company name is written in Arabic: 'الشركة الوطنية المتميزة للإنشاءات والطاقة "نيس"', followed by 'Construction Division' and 'Service Sector' in English.

**NECE**  
NATIONAL EXCELLENCE  
FOR CONSTRUCTION & ENERGY CO.

الشركة الوطنية المتميزة  
للإنشاءات والطاقة "نيس"  
Construction Division  
Service Sector







## Company Profile

- ▶ The company has formed services teams of specialist using most modern art of technology of construction equipment to maintain its serious progress towards the intended quality.
- ▶ It has now become a young professional and dynamic corporation that adopts true quality at every stage of power projects construction.
- ▶ The company goes on to operate without sacrificing its principles pursuant to corporate objectives in order to contribute directly or indirectly to national economy and to place its brand in global positive orbit.



## Vision

- To be a world-class service provider, recognized as a construction leader in the field of Electrical power Systems, Wherever we operate, we act in a responsible way, reliable and customer friendly, based on a firm set of values and business principles, Bearing in mind the humanitarian needs of the company employees.



## What We Do

Main activities are

**Erection, Installation of power station & EHV substations such as:**

- ▶ GIS and conventional HV equipment indoor & outdoor
- ▶ Generators , Turbines
- ▶ Switchgear, Control, protection, AC & DC panel boards
- ▶ Telecommunications & Fiber Optics
- ▶ Transformers, Reactors & Capacitors
- ▶ Cable laying & cable terminations control and power
- ▶ Rehabilitation , Expansion & Repairing of station equipment



### Maintenance & Overhauling

- ▶ Maintenance of Generation Station
- ▶ Maintenance of Substations
- ▶ Maintenance of Distribution station
- ▶ Maintenance of Distribution & package Transformers



### Testing & Commissioning

- ▶ Generation Testing
- ▶ Sub Station Testing
- ▶ Transformer Testing & Oil Treatment
- ▶ Fiber Optic Testing
- ▶ High Voltage Testing



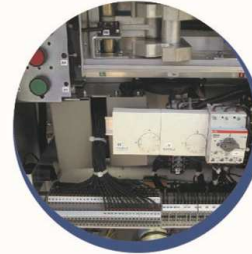


## Construction Division

### Erection, Installation of power station & EHV substations

NECE is capable to erect and install all generation , EHV & HV station equipment such as but not limited to gas insulation and conventional switchgear starting from 380 Kv up to 0.4 KV , including panels supporting , cable trays , cable laying & termination , Bus bar connection , gas processing .

Also we have wide experience of power station upgrading and extensions, relays and control equipment replacement.



## Service Sector

### Maintenance & Overhauling

Using highly trained and wide experience team NECE are capable to maintain all kind of power station equipment such as generators , switchgear , transformers , circuit breakers , disconnecter switches , relay, control and auxiliary panel system , we are performing pre scheduled preventive maintenance , trouble shooting and Major overhauling maintenance , we are providing project management and time schedule proposal for turnkey maintenance projects.







## Service Sector

### Testing & Commissioning

Using the most modern test equipment from reputable manufacturers (Omicron, Megger, Dilo, High Volt) NECE has a professional, Qualified and wide experience team in the field of testing & commissioning of power system we are testing the following:

- 1- Generation station including rotors , stator ,exciter ,Auxiliary systems , Turbine , protection system , DCS & MCC panels
- 2- Sub stations testing including relays of all manufacturers , scheme & function test , protection , control panels , primary & secondary injection, GIS ,indoor & outdoor switchgear up to 380 Kv systems , fault & event recorders , Bus bar protection system , Stability test , AC &DC panels , Batteries & Battery chargers , End to End , start up , energizing , One site training and factory test.
- 3- Transformer testing for all ratings including Turns ratio, winding DC resistance, Tan Delta, vector group, calibration of Oil &winding temperature using Broman equipment, inrush and harmonic measurement, evacuation, oil filtration& purification, oil breakdown test.
- 4- Fiber Optic including pre & post installation test, splicing& termination of cables, polarization & chromatic dispersion testing, End to end test.
- 5- High Voltage Test including partial discharge, Cables testing by DC test set, Cables testing by VLF test set, Switchgears power frequency withstand test.



## Equipments

• NECE service sector has a wide range of digital and computerize equipment , we are using the last version of equipment , we have the complete package solution necessary to perform the best service even for sophisticated projects , testing team is using equipment models from the reputable manufacturers , we have Omicron CPC 100 & CT analyzer , Megger Frija 300&306 , Sverker 780, Power supply unit B10E, MicroOhm meter MOM600, Breaker analyzer EGIL, Primary current injection Oden AT, BROMAN temperature calibrator , YOKOGAWA whetstone bridges, DILO density controller and sensor test , SF6 multi-analyzer, digital Vacuum gages, gas detectors, Megger TTR 330-47, Tr Ohm meter MTO 330, Tan Delta 4310, VLF-60KV AC , PFT-100KV AC TEST SETS & PTS-100KV DC TEST SET FROM HIGH VOLTAGE

• In addition to all necessary in hand test equipment and test plugs.





## Quality

NECE has a strong and firm quality assurance system following local and international instructions, needs, requirements & codes.

NECE employees are quite trained and have the necessary experience about the meaning of quality and quality assurance system, our goal is gaining customer satisfaction using highest quality service.



## Client

Mainly Saudi Electricity Company (SEC) , Aramco , SABIC, and all grate organizations our targeted clients , in addition to international organizations such as Siemens ,ABB, GE, Alstom , AREVA & Schneider , Also we are cooperating with all main local contractor to uphold our country contribution

Our policy with our client is clear and firm, we are looking for our client satisfaction providing the utmost quality service.



## About NECE Group

NECE is manufacturing, trading & contracting company NECE Trading division is supplying all necessary electrical component Which consists of the power plant such as transformers (specially the dry type) , panel boards & cables from international brands.



Al-Nafie Steel Co. has commenced merchandising and importation of steel and steel allied products including stainless steel, aluminum and brass since the year 1979 in different specifications of European, American and Japanese origins.

Out of our rich experience accumulated in the last 30 years in this field, Al-Nafie Steel Co. has gained good ideas of the requirements of our local market in particular and the neighboring countries markets in general for the required items, sizes and specifications.



Pioneers IT was founded by a team of competent professionals who has over 18 years of experience in the technology field and more than 10 years in ERP Industry with the mission of "delivering the optimum IT solution for your company"

As a Microsoft Certified Partner, Pioneers IT offers professional services in the development, implementation, Training and support of integrated business management systems. Fully focused on Microsoft Dynamics ERP and CRM solutions, and their specialized add-ons.





Jeddah, Palestine Street, behind Jamjoom Center  
Business Park, Villa C09  
Tel : (00966) 12- 2619377 | Fax : (00966) 12- 2619365  
P.O Box: 31230 | Jeddah : 21497  
Email : [sales@nece.com.sa](mailto:sales@nece.com.sa) | Website : [www.nece.com.sa](http://www.nece.com.sa)